



L #1-8

M # 5-10, 15

H # 8-15

Algebra 1 Unit 3

Intervention 3.1

+ 2. Evaluate $(m)(n + 6)$
when $m = 6$ and $n = 3$



+ 3. Evaluate $m + 2p$
when $m = 6$ and $p = 4$



+ 4. $Y = 2x - 7$
Solve for y when $x = 3$



+ 5. $y = 3x - 5$
Solve for y when $x = -2$



+
6. $y = 5 - 3x$
Solve for y when $x = 7$



+ 7. Solve by substitution

$$y = -3x + 3$$

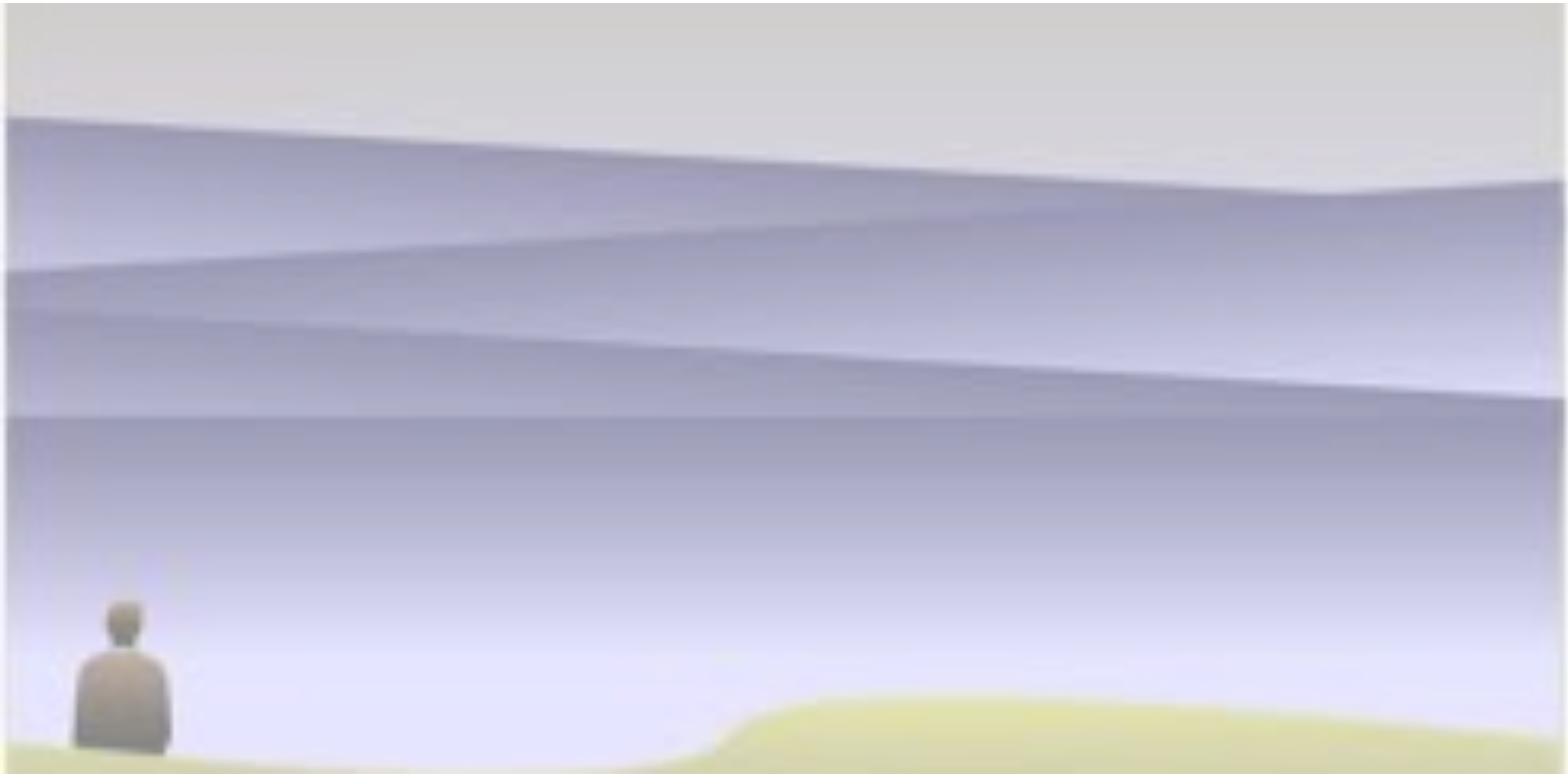
$$y = -4x + 3$$



+ 8. Solve by substitution

$$y = x - 5$$

$$y = 8x - 19$$



+ 9. Solve by Substitution

$$6x - 3y = -12$$

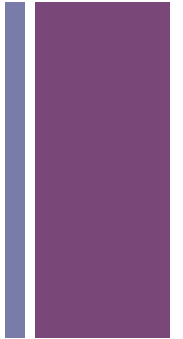
$$y = 6x + 12$$



+ 10. Solve by Substitution

$$- 8x - 3y = 9$$

$$y = -3x - 3$$



+ 11. Solve by substitution

$$-x + 4y = -1$$

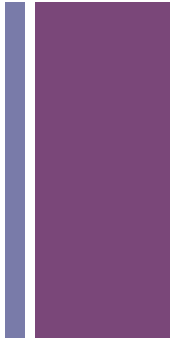
$$y = x + 2$$



+ 12. Solve by Substitution

$$-7x + 3y = 16$$

$$y = 5x + 16$$



+ 13. Solve by substitution

$$-2x + 3y = 10$$

$$x + 2y = -12$$



+ 14. Solve by substitution

$$4x - 3y = -4$$

$$x - 2y = -1$$



+

15. Hope has 4 flowers and picks 2 flowers a day. Faith has 8 flowers and picks 1 a day.

A) write an equation for Hope

B) write an equation for Faith

C) When will they have the same amount of flowers?

D) How many flowers will it be?

E) solve by substitution

F) solve by graphing

+15. John's class has 8 cans and collects 4 cans a week for the canned food drive.

Bills class has 16 cans and collects 2 cans a week.

A) write an equation for John

B) write an equation for Bill

C) When will both classrooms have the same amount cans?

D) How many cans will it be?

E) solve by substitution

F) solve by graphing

+ Happiness is on the Horizon!

